

+44(0)1909 566911

coadecast



**coadecast**  
yesterday's tradition, tomorrow's technology.

Cast stone has come a long way since Mrs Coade first manufactured imitation stone in the 1700s. Originally only used on the most prestigious properties, the material is now a mainstream building material specified and used by most of the UK's leading architects, contractors and house builders.

coadecast is an evolutionary material which is manufactured as a high performance wet cast architectural concrete. Advanced concrete admixtures and batching technologies allow the manufacture of products defined by crisp, clean and, most importantly, durable edges and corners. Low water absorption ensures supplied appearance is maintained far beyond that expected of traditional "semi dry" cast stone.

Welcome to the new cast stone age .....

## COLOURS + TEXTURES



B100 Bath



B108 Nevada



B101 Sand



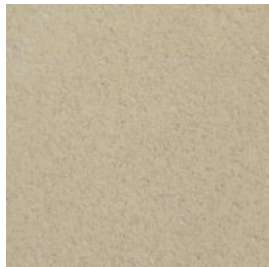
G101 Steel Grey



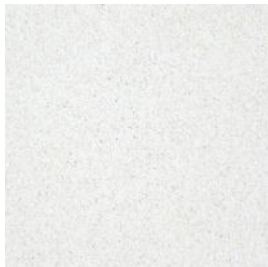
B103 Sahara



G109 Comet



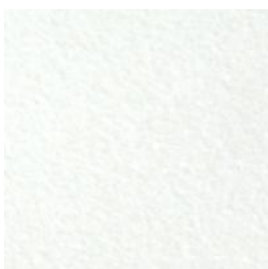
B104 Denby



P100 Portland



B106 Sherwood



W101 Artic White



B107 Ivory



W102 Sierra White

## TECHNICAL DATA

Compliance: Manufactured in accordance with BS 1217: 2008

Compressive Strength: 50 MPa when tested in accordance with BS EN 12390-3

Absorption: < 0.25ml/(m<sup>2</sup>.s) at 10 min  
< 0.10ml/(m<sup>2</sup>.s) at 1 hour  
BS 1881-208

Dimensional Tolerances	<600	+/- 2mm
	601-1000	+/- 3mm
	1001-2500	+/- 4mm
	2501-4000	+/- 5mm
	>4001	+/- 6mm

coadecast is manufactured from a mixture of ordinary white Portland cement, sand, naturally occurring aggregates and advanced concrete additives.

The material is specifically formulated to match our Glass Reinforced Concrete (GRC) products and can safely be used on the same buildings/elevations without any noticeable differences other than those expected with natural or traditional cast stone.

We offer a full design service for bespoke items as well as a range of standard products. Please visit our web site for further details.

Samples available on request.

+44(0)1909 566911

[www.coadecast.com](http://www.coadecast.com)

